

## STATEMENT OF QUALIFICATIONS

2021

The Krydon Group was founded in 1990 and it has been our vision to be our clients' first choice for consulting services, design support and product solutions in energy, facilities and communications within the government sector. We believe that the best way to achieve this goal is to focus on our clients' business objectives. When our clients tell us they've received exactly what they wanted, that is the standard for client satisfaction.

Our services include:

- ◇ Program & Project Management
- ◇ System Design Support
- ◇ Equipment & Material Provisioning
- ◇ Installation, test & commissioning
- ◇ Custom Product Manufacturing

We find that building trust is an effective way to do business. When a business relationship is based on trust, projects run smoother and ultimately with a better final outcome. Earning our clients' trust involves teamwork, communication and a shared vision. Because we are a team, we only succeed when our clients succeed.



System Design Support

*"I'm thankful for the superior support you've given me & to GDIT! I look forward to our continued partnership & support in the near future."*

**TANYA Y. JOHNSON**  
GENERAL DYNAMICS INFORMATION  
TECHNOLOGY- ARMY IT PROGRAMS

**GENERAL DYNAMICS**  
Information Technology

The Krydon Group Inc. maintains an active [SAM.gov](https://sam.gov) registration:

- ◆ DUNS: 623758133
- ◆ CAGE CODE: 1YAA3
- ◆ FEIN: 22-3049941
- ◆ SAM's EXPIRATION: 5/3/22
- ◆ SBE/MBE/DBE/SBA 8(a)
- ◆ ISO9001:2015 CERTIFIED
- ◆ BONDING LIMITS: \$1M



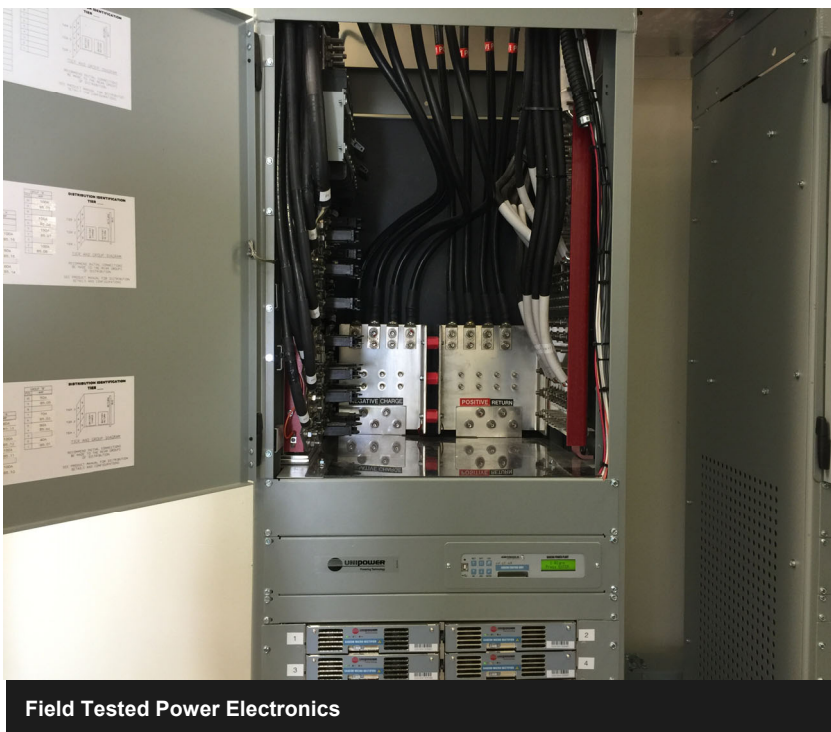
**Stationary Battery & Power Electronics**

The Krydon Group Inc. is C&D Technologies' exclusive government representative and manages all federal, state and local government orders. C&D products are providing backup power and smart energy solutions for the Government's critical information infrastructure at sea, at forward deployed bases, and here in the United States. Our products are made in the US and supported with US based personnel.

## Success Is a Learned Process....

Our Program Management (PM) approach is a partnership with owners that fosters effective, cost-efficient and innovative project delivery. Acting as an extension of client staff, the program manager protects the client's interests in all areas of project implementation from planning and design, through procurement and execution, and into operations and maintenance.

Program management at Krydon means working with our clients to anticipate the key issues that could impact successful completion of not only the individual projects that make up a program, but the overall program itself.



**Field Tested Power Electronics**

*"We rely on our relationship with Krydon to effectively navigate through the government maze, to enable us to bring business opportunities that would otherwise be more of a challenge to us independently"*

**DAVID BARNES**  
UNIPOWER LLC





World Class Manufacturing

Our firm has been engaged by several agencies and private firms to custom manufacture wireless shelters, portable mobile laboratories, air monitoring trailers and portable power containers. The basis of our construction is the standard ISO shipping container. This structure provides incredible durability, structural strength and versatility in modification for the end user. Our skilled craftsman can transform an ISO container to meet your organization's mission objectives.

## Custom Solutions....

Krydon's manufacturing capabilities are adaptable to your specific needs. Our team is ready to help you at every step of the process. We also understand that change orders during the approval process, and subsequent construction may result in modifications to the original design which are a part of many projects. If this occurs, we can incorporate these changes, limiting any impact on your requested delivery date, and keeping your project on schedule. Whether your shelter building needs include customer installed equipment, or simple electrical requirements, we have the solution. Integrated and installed systems such as AC/DC, controls, power generation components and power storage or other applications, can be pre-tested for quality and reliability so you will be up and running as soon as your building is delivered.



Custom Interior Build-Out

*"You and your team are top notch and I believe your customer service is second to none. Y'all have definitely taken care of us and provided the Navy a superior product"*

**ROB BRAZEAU**

US NAVY-- KINGS BAY



## Customer Pledge....

- 1.Thinking like the customer and sharing their vision
- 2.Defining the scope of the project and project goals
- 3.Developing a specific timeline and sequence of events
- 4.Working directly with the customer to negotiate and agree to specific deliverables
- 5.Managing the budget
- 6.Keeping customers and all project stakeholders informed with regular up-date meetings
- 7.Bringing successful closure to projects



**We look forward to working with you and your staff to assist with your future project needs. Please contact us to discuss your specific project requirements.**

900 N. Kings Highway, Suite 208, Cherry Hill, NJ 08034  
(877) 854-1342

